

New Jersey Department  
of Transportation  
1035 Parkway Avenue  
Trenton, New Jersey 08625

# ROUTE 71

## Bridge over NJ Transit, Bridge Replacement

Township of Ocean, Borough of Deal &  
City of Long Branch, Monmouth County

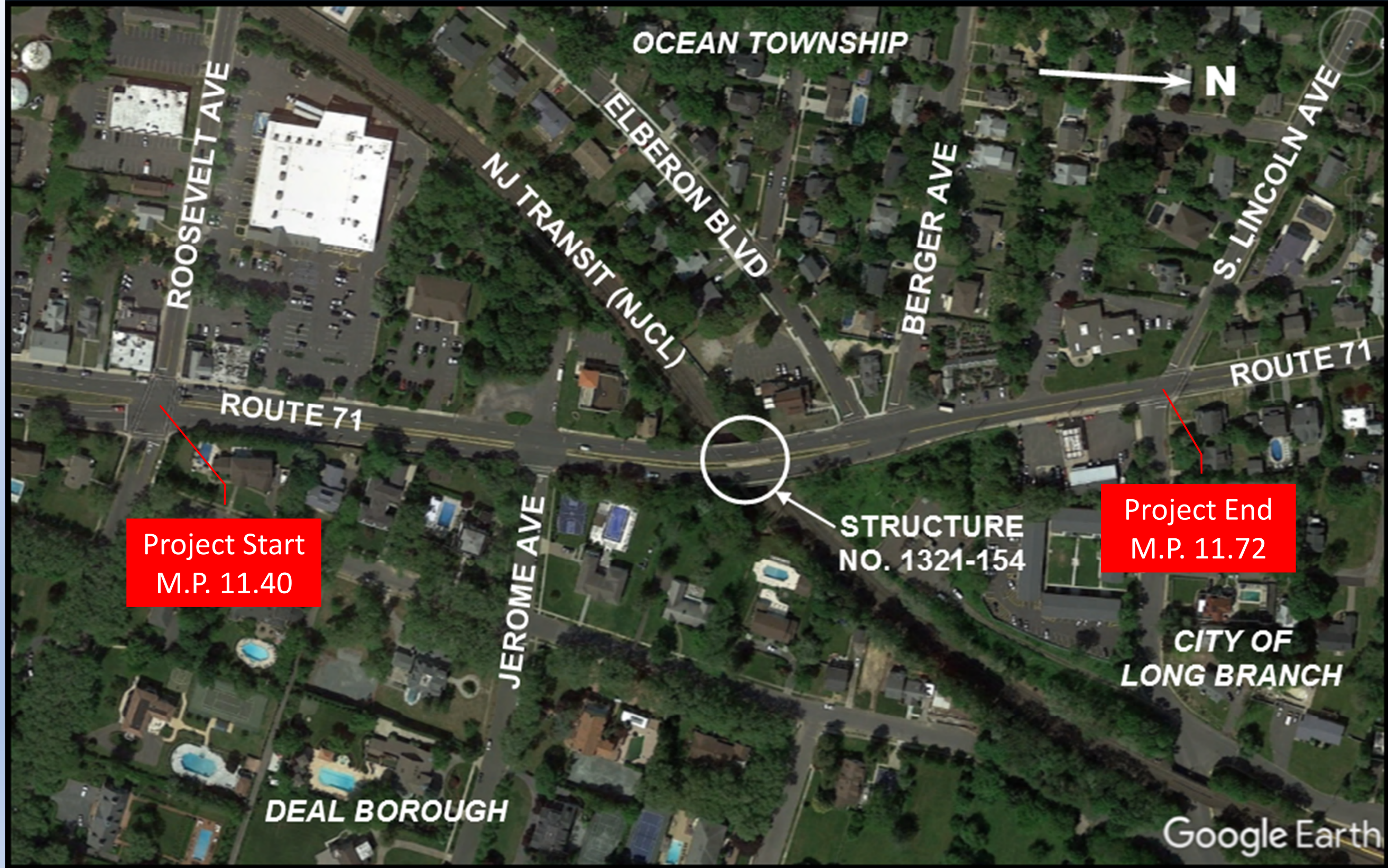


Taylor Wiseman & Taylor  
804 East Gate Drive, Suite 100  
Mount Laurel, New Jersey 08054

**Local Officials Briefing**

March 2025

# PROJECT AERIAL MAP



# PROJECT TIMELINE

- **Previous LOB Meeting**

- August 25, 2023

- The Geometry of Elberon Boulevard as a 50' Radius Cul-De-Sac

- **Public Information Center (PIC)**

- August 30, 2023

- **Access Meetings**

- August 28, 2024 (208 Norwood Avenue)
- September 19, 2024 (215 Elberon Boulevard)
- December 09, 2024 (200 Elberon Boulevard)

- **Resolutions Of Support**

- **April 12, 2024 (Deal Borough)\*TBD.**
- September 25, 2024 (Long Branch Township)
- October 14, 2023 (Ocean Township)

❖ **Stormwater & Drainage:  
Ongoing**

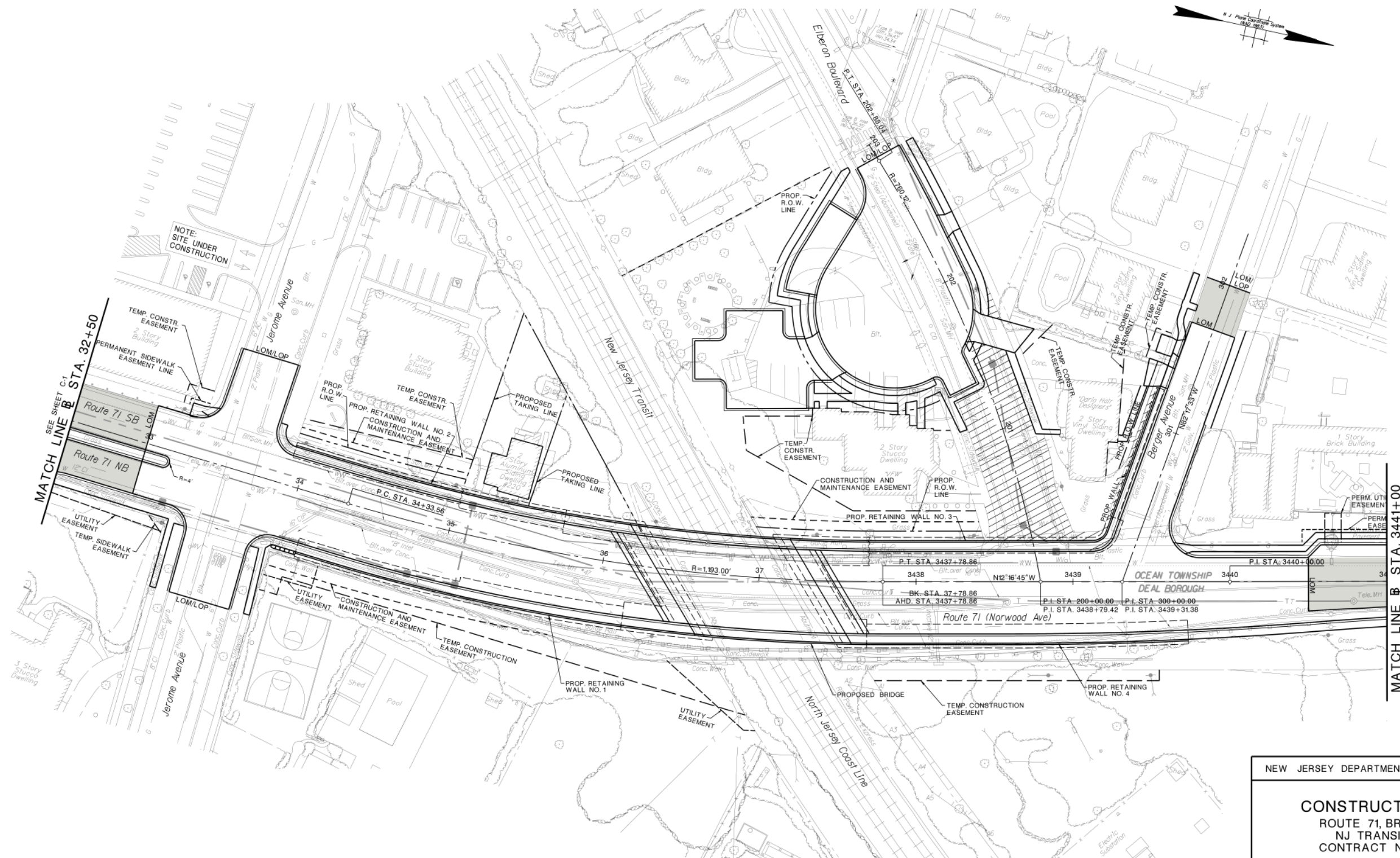
❖ **Environmental Process:  
Ongoing**

DEAL BOROUGH  
OCEAN TOWNSHIP

MONMOUTH COUNTY



STATE	FEDERAL PROJECT NO.
N.J.	###



Taylor Wiseman & Taylor  
ENGINEERS / SURVEYORS / SCIENTISTS  
124 GATHER DRIVE, SUITE 150, MOUNT LAUREL, NJ 08054  
TELEPHONE: (908) 257-7200 FAX: (908) 722-8250



NEW JERSEY DEPARTMENT OF TRANSPORTATION

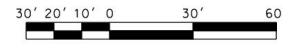
**CONSTRUCTION PLAN**  
ROUTE 71, BRIDGE OVER  
NJ TRANSIT (NJCL)  
CONTRACT NO. 011154490

TAYLOR - WISEMAN & TAYLOR  
CERTIFICATE OF AUTHORIZATION NO. 24GA28032900

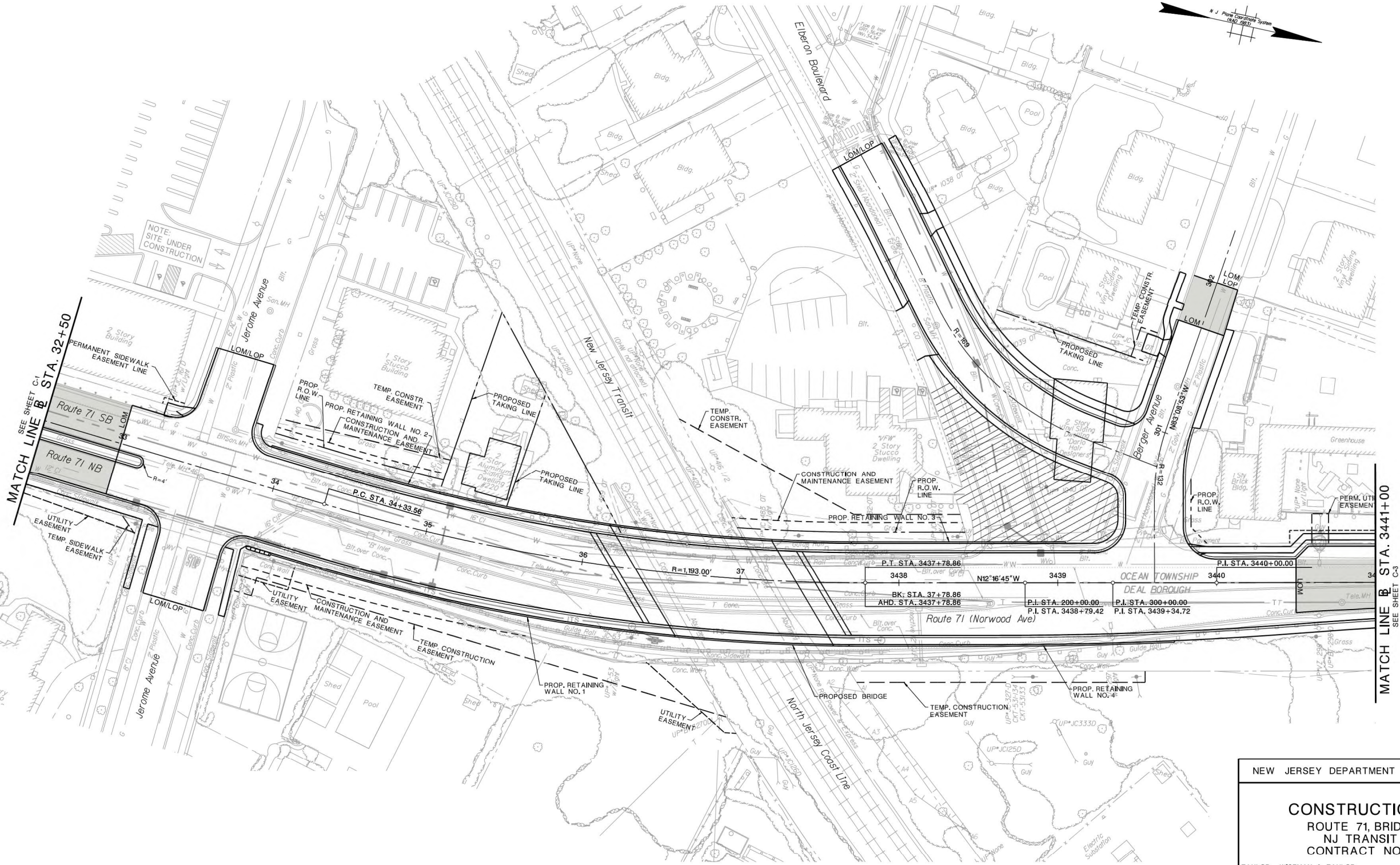
DENNIS A. MOORE  
NEW JERSEY PROFESSIONAL ENGINEER LICENSE NO. 24GE0451900

DEAL BOROUGH  
OCEAN TOWNSHIP

MONMOUTH COUNTY



STATE	FEDERAL PROJECT NO.
N.J.	###



SEE SHEET C1  
MATCH LINE B STA. 32+50

MATCH LINE B STA. 34+11+00  
SEE SHEET C-3

Taylor Wiseman & Taylor  
ENGINEERS / SURVEYORS / SCIENTISTS  
SUBSURFACE UTILITY ENGINEERING  
100 MONMOUTH AVENUE  
MANTOLoking, NJ 08542  
TELEPHONE: (609) 252-2020 FAX: (609) 722-2656

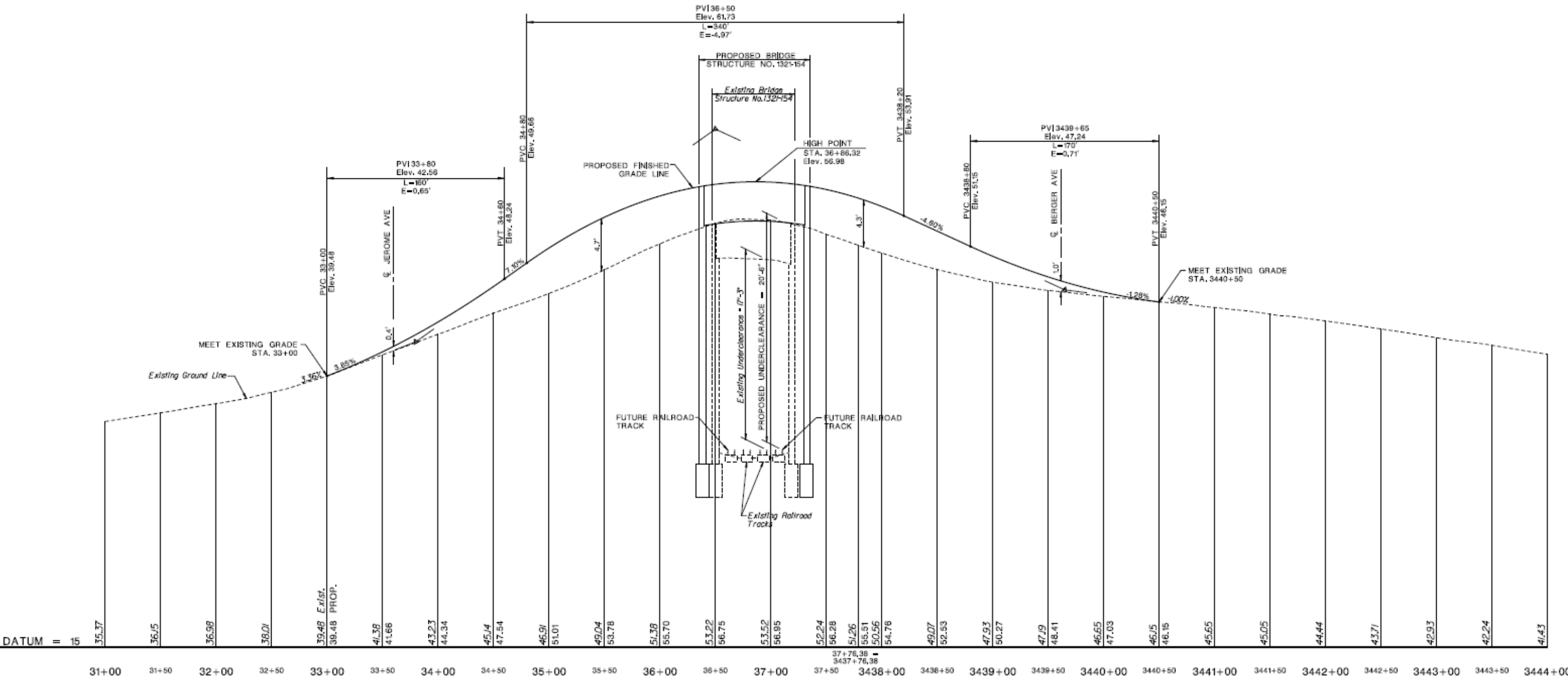


NEW JERSEY DEPARTMENT OF TRANSPORTATION

**CONSTRUCTION PLAN**  
ROUTE 71, BRIDGE OVER  
NJ TRANSIT (NJCL)  
CONTRACT NO. 011154490

TAYLOR - WISEMAN & TAYLOR  
CERTIFICATE OF AUTHORIZATION NO. 24GA28032900

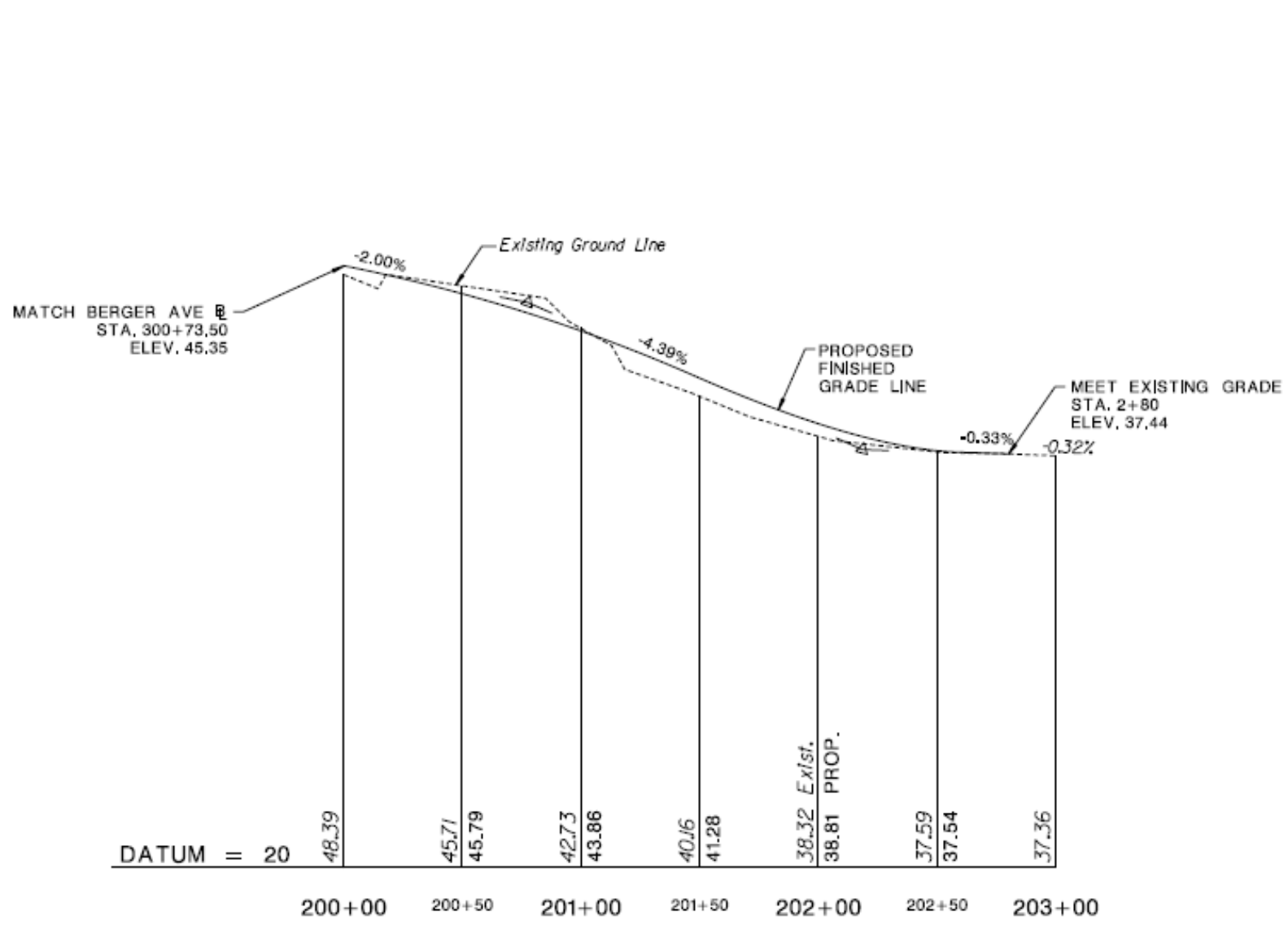
DENNIS A. MOORE  
NEW JERSEY PROFESSIONAL ENGINEER LICENSE NO. 24GE04513100



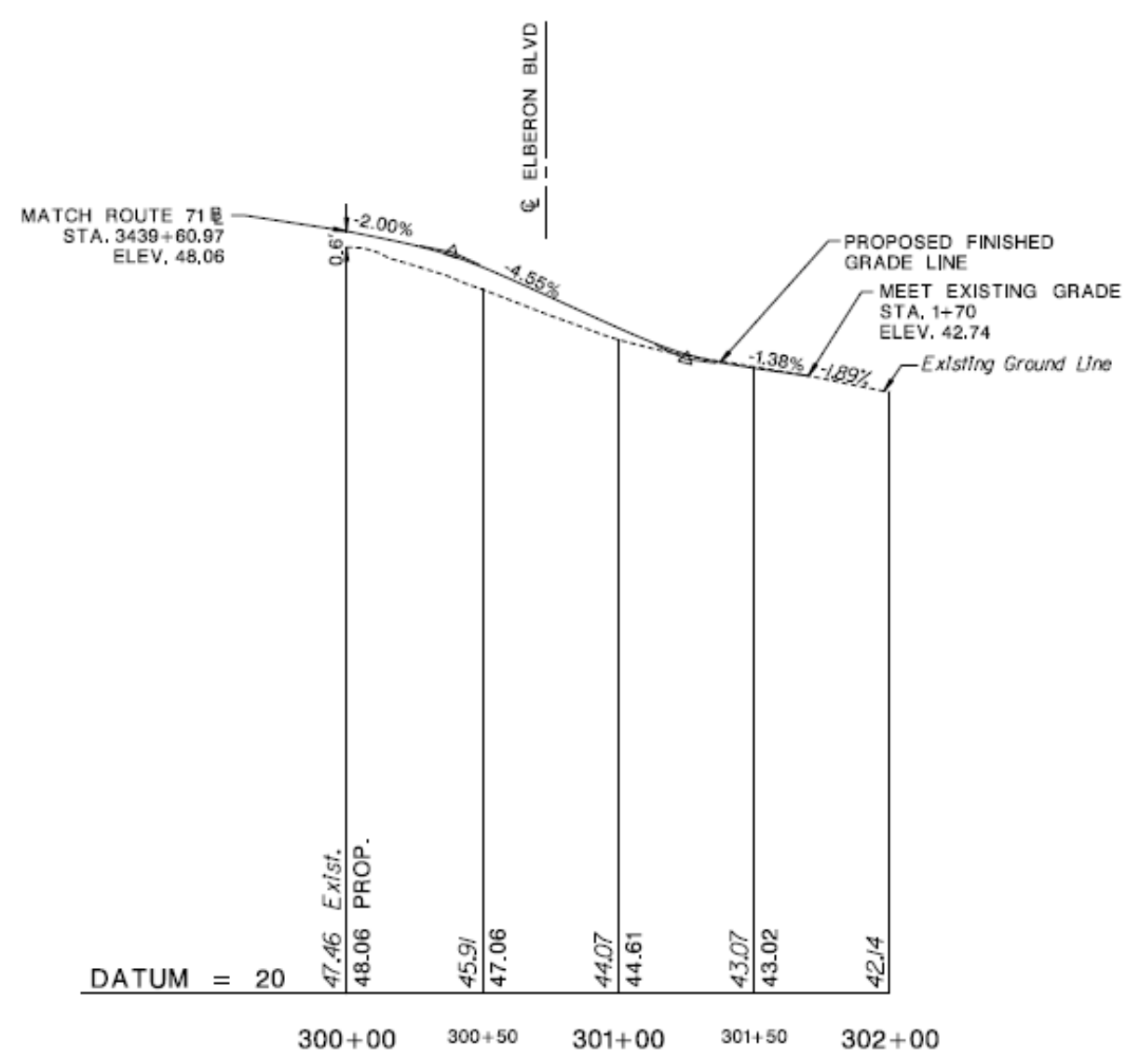
### ROUTE 71 PROFILE

DESIGN SPEED = 35 MPH (POSTED SPEED)

20'-6" UNDERCLEARANCE



ELBERON BOULEVARD PROFILE



BERGER AVENUE PROFILE

# CONSTRUCTION STAGING

- **STAGE 1**

- **Work will begin on the West Side of Route 71.**
- **Traffic will be shifted to East Side of Route 71.**

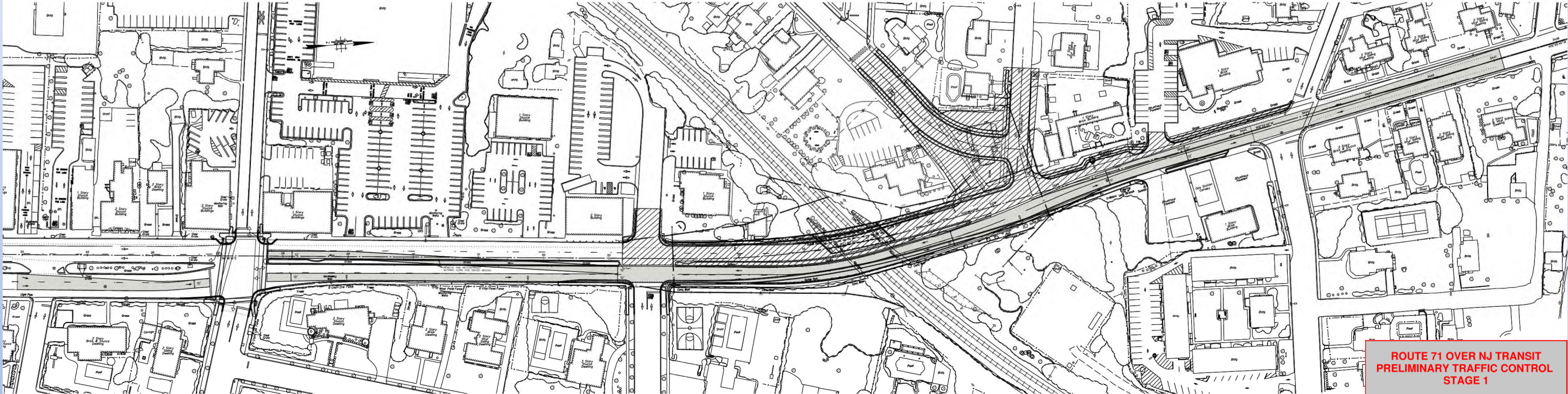
- **STAGE 2**

- **Work will begin on the East Side of Route 71.**
- **Traffic will be shifted to West Side of Route 71.**

**The grass median barrier altered during staging between Roosevelt Ave and Jerome Ave will be restored after construction has finished.**

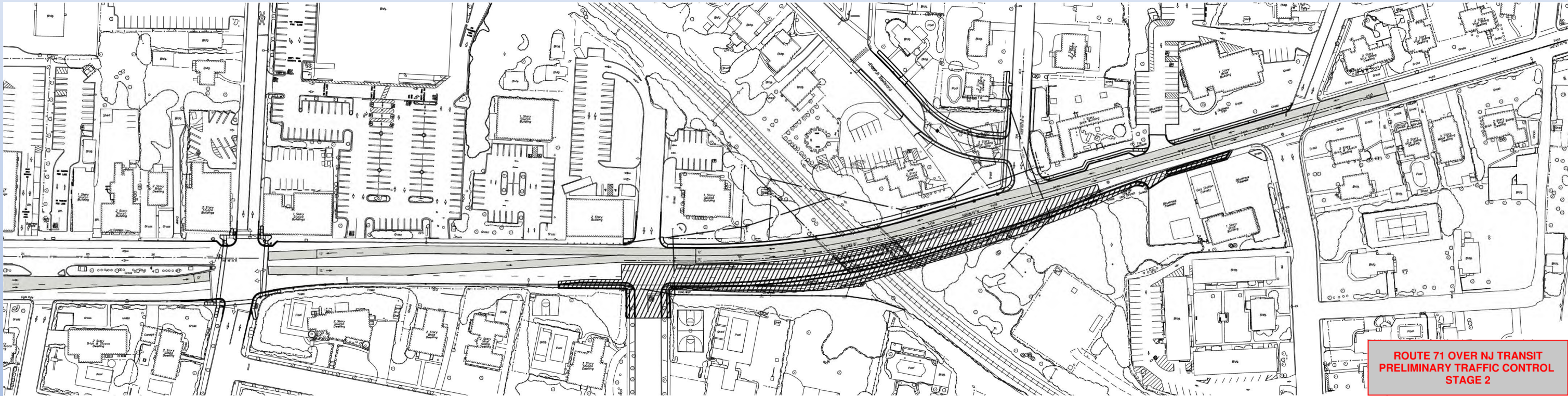


# STAGE 1



**ROUTE 71 OVER NJ TRANSIT  
PRELIMINARY TRAFFIC CONTROL  
STAGE 1**

# STAGE 2



**ROUTE 71 OVER NJ TRANSIT  
PRELIMINARY TRAFFIC CONTROL  
STAGE 2**